

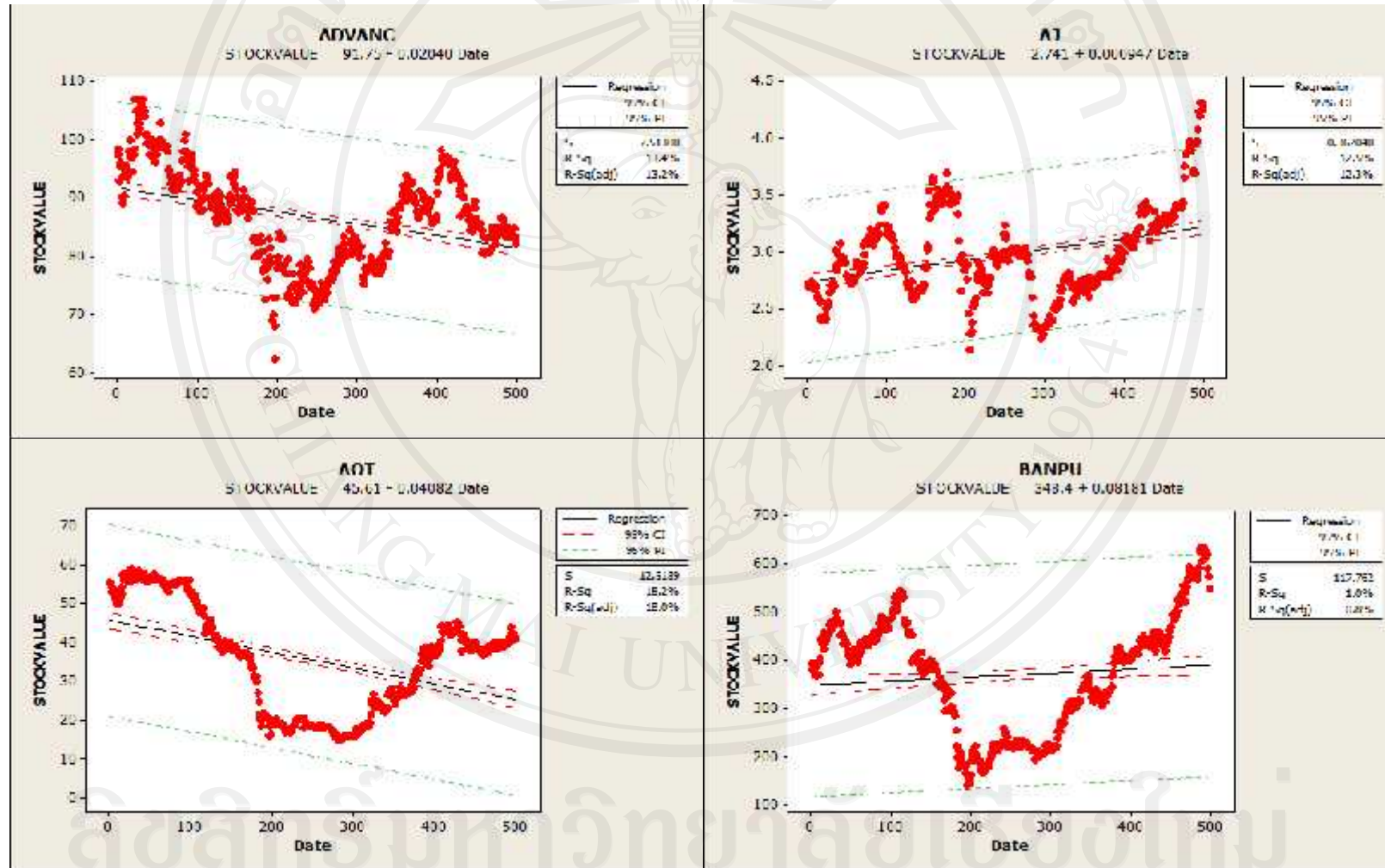


ภาคผนวก

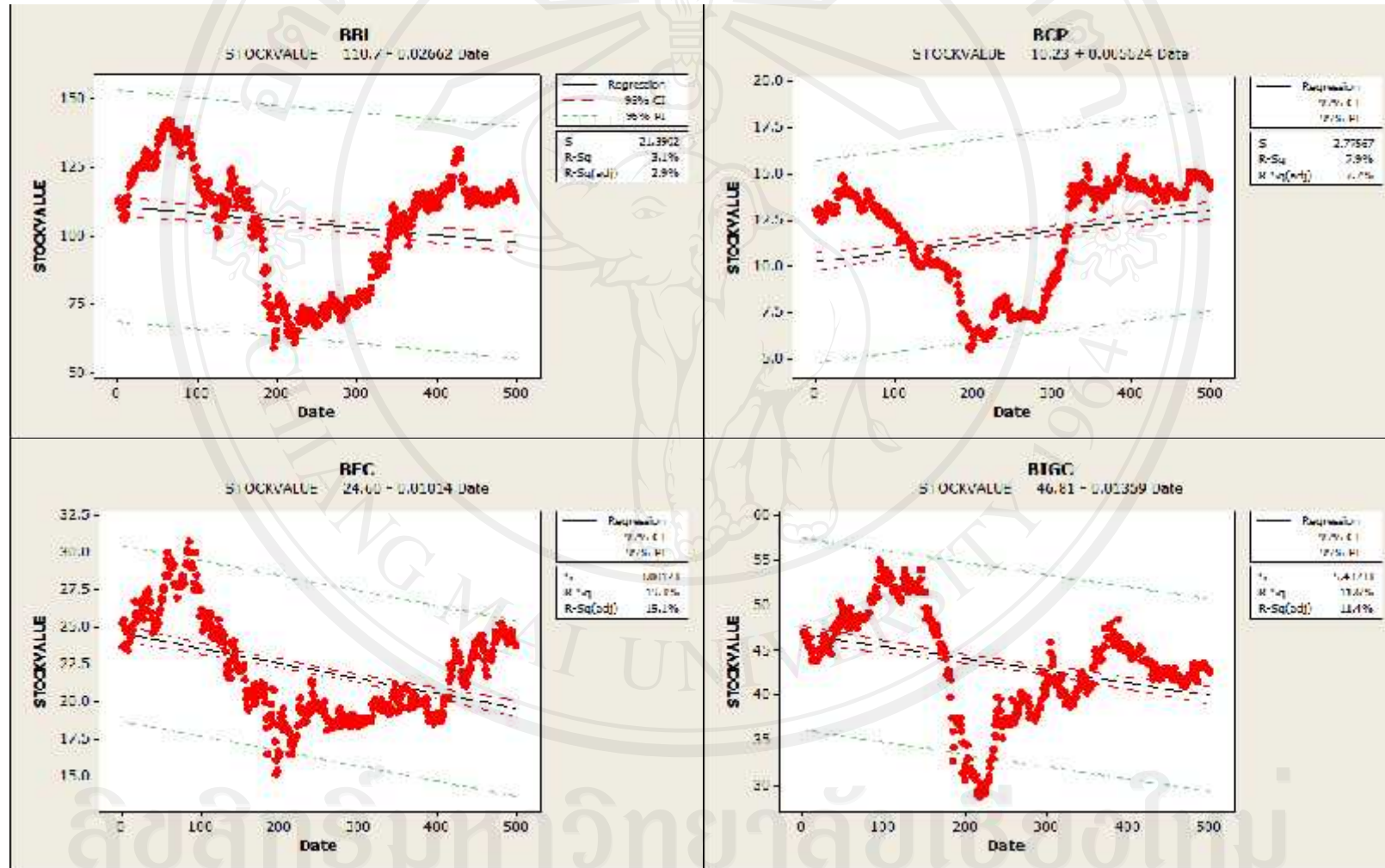
ลิขสิทธิ์มหาวิทยาลัยเชียงใหม่

Copyright© by Chiang Mai University
All rights reserved

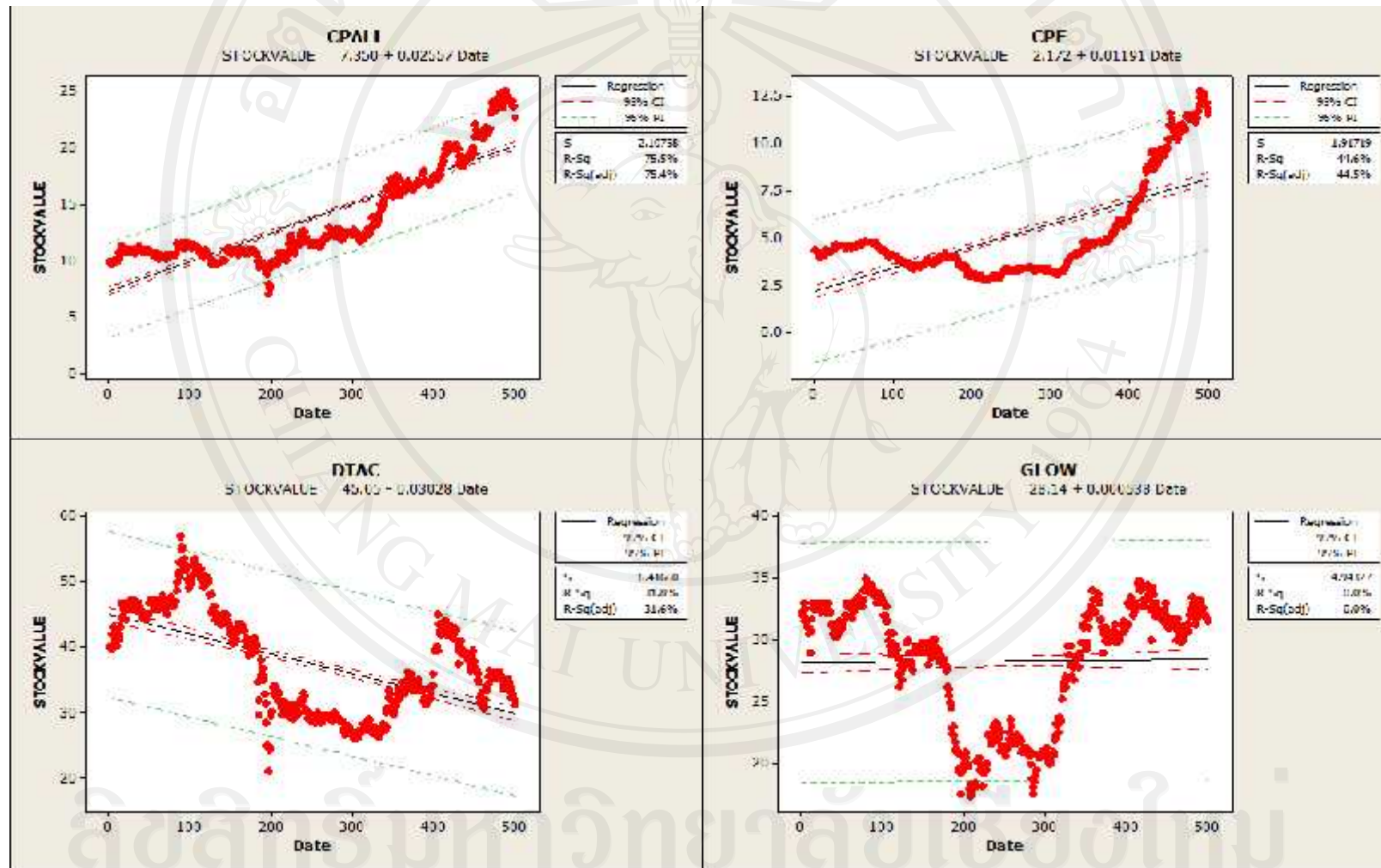
รูปภาพ4ก กราฟแสดงการทำ Linear Regression ของแต่ละหลักทรัพย์เพื่อหาวันเริ่มต้นในการทำ simulation



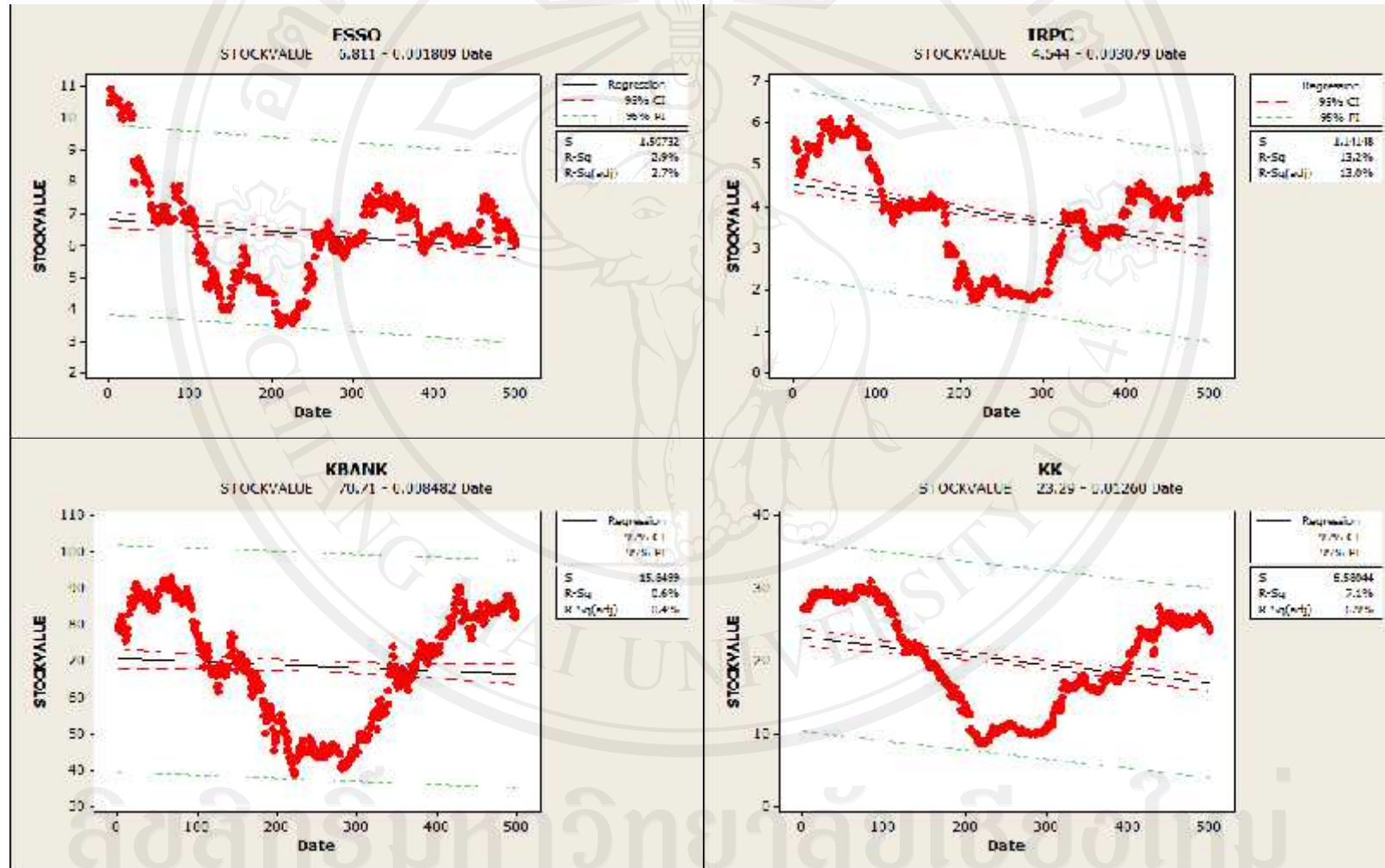
รูปภาพ4ก (ต่อ)



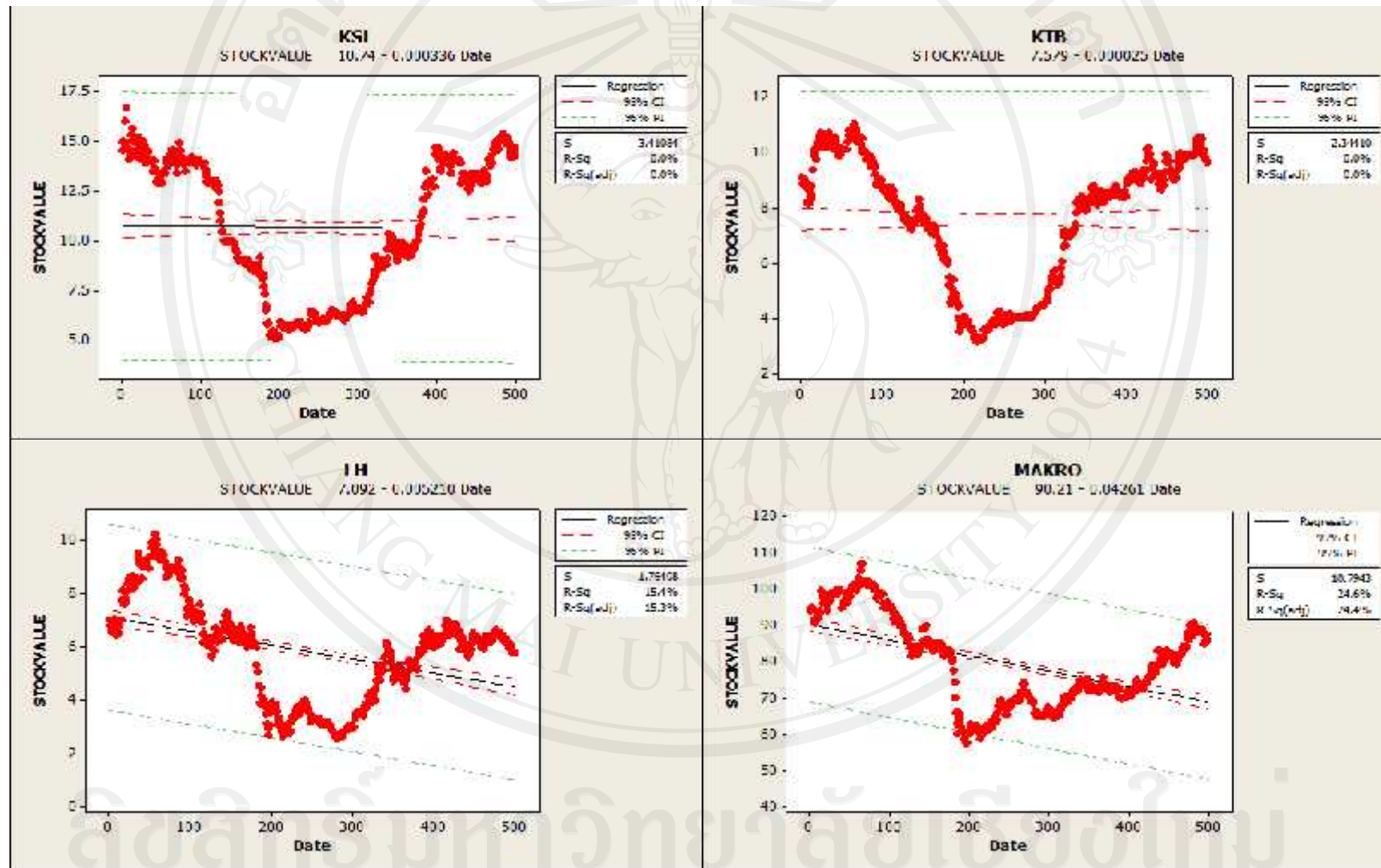
รูปภาพ4ก (ต่อ)



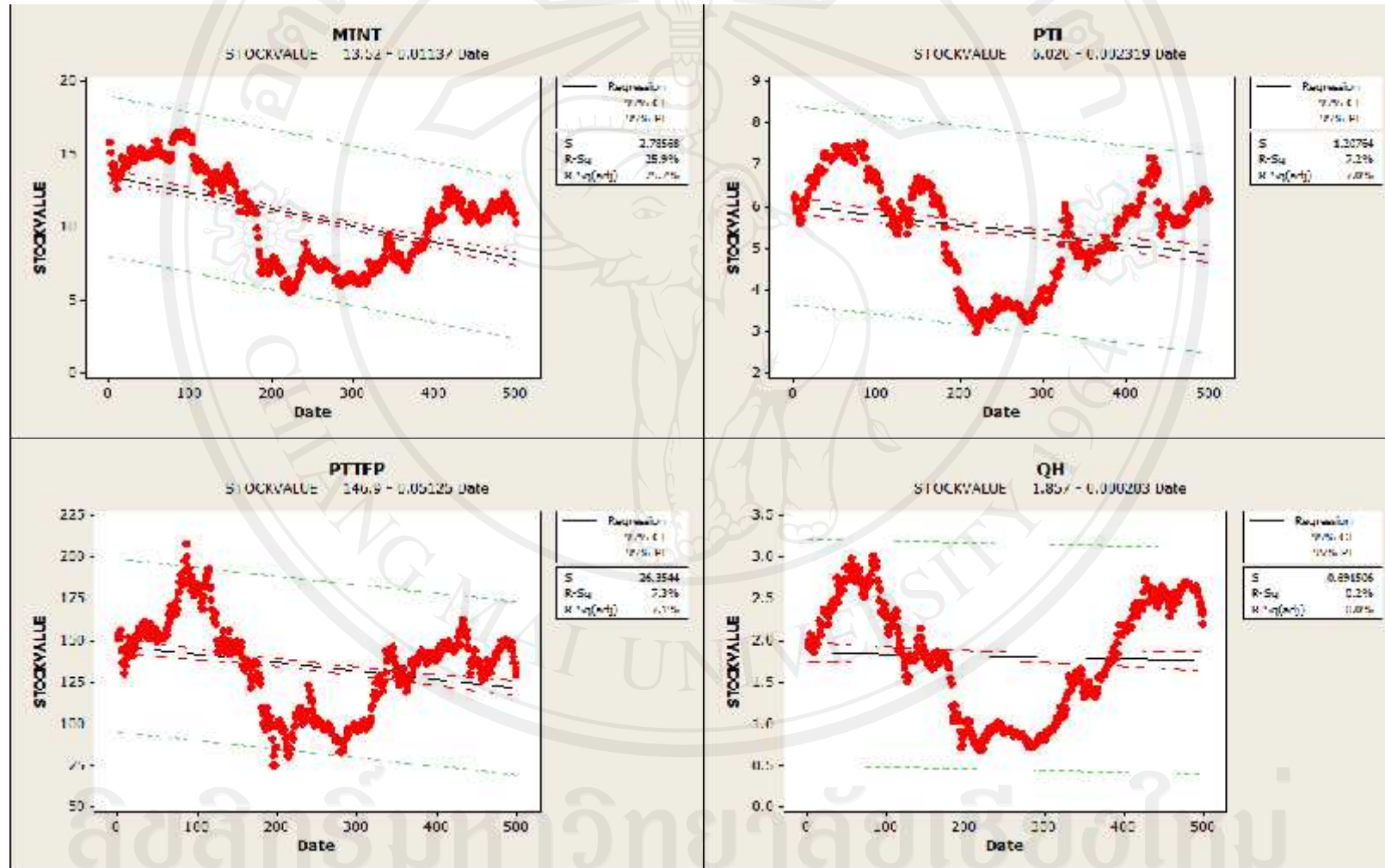
รูปภาพ4ก (ต่อ)



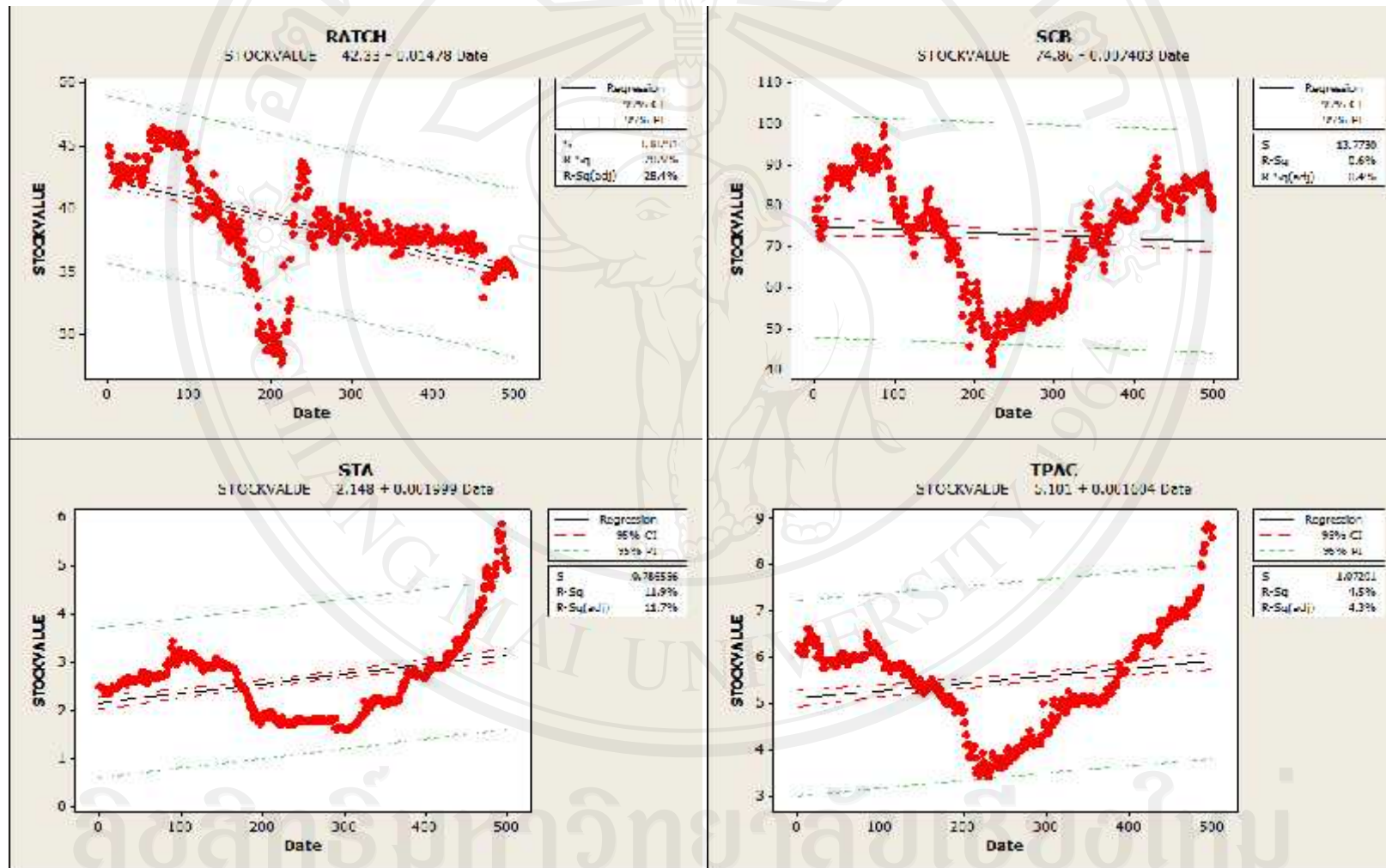
รูปภาพ4ก (ต่อ)



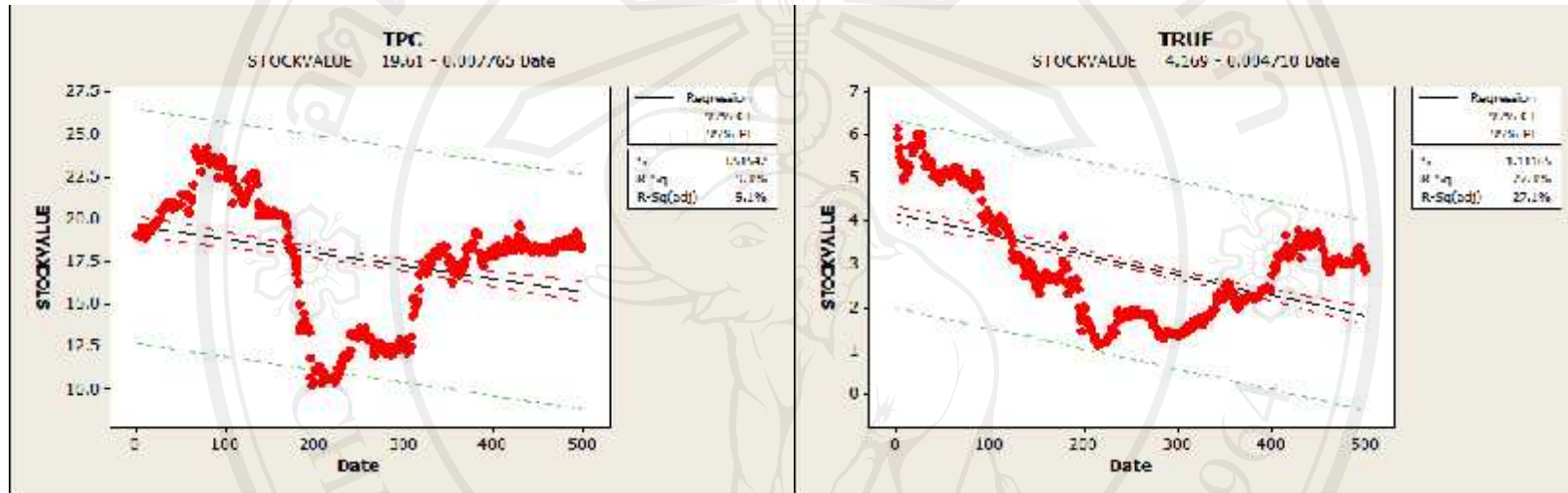
รูปภาพ4ก (ต่อ)



รูปภาพก (ต่อ)



รูปภาพ4ก (ต่อ)



ลิขสิทธิ์มหาวิทยาลัยเชียงใหม่

Copyright© by Chiang Mai University

All rights reserved

ตาราง 4 ข ผลลัพธ์การทำ Simulation ของแต่ละหลักทรัพย์ที่ได้มูลค่าร้อยละของผลตอบแทนสูงสุดของแต่ละหลักทรัพย์

A	B	C	D	E	F	G	H	I	J	K
ADVANC	7DAY	2	6/10/2008	12/25/2009	85	76,150.00	-6,177,043.20	295,706.80	10,000,000.00	2.96
AJ	14DAY	7	12/27/2007	1/18/2010	4.24	1,236,627.00	-1,233,366.32	4,009,932.16	10,000,000.00	40.1
AOT	6MONTH	2	7/15/2008	1/15/2010	42	68,653.00	-2,688,265.00	195,161.00	10,000,000.00	1.95
AOT	6MONTH	3	7/15/2008	1/15/2010	42	68,653.00	-2,688,265.00	195,161.00	10,000,000.00	1.95
AOT	6MONTH	4	7/15/2008	1/15/2010	42	68,653.00	-2,688,265.00	195,161.00	10,000,000.00	1.95
AOT	6MONTH	5	7/15/2008	1/15/2010	42	68,653.00	-2,688,265.00	195,161.00	10,000,000.00	1.95
AOT	6MONTH	6	7/15/2008	1/15/2010	42	68,653.00	-2,688,265.00	195,161.00	10,000,000.00	1.95
AOT	6MONTH	7	7/15/2008	1/15/2010	42	68,653.00	-2,688,265.00	195,161.00	10,000,000.00	1.95
BANPU	6MONTH	2	9/1/2008	9/2/2009	402	31,194.00	-9,998,927.85	2,541,060.15	10,000,000.00	25.41
BANPU	6MONTH	3	9/1/2008	9/2/2009	402	31,194.00	-9,998,927.85	2,541,060.15	10,000,000.00	25.41
BANPU	6MONTH	4	9/1/2008	9/2/2009	402	31,194.00	-9,998,927.85	2,541,060.15	10,000,000.00	25.41
BANPU	6MONTH	5	9/1/2008	9/2/2009	402	31,194.00	-9,998,927.85	2,541,060.15	10,000,000.00	25.41
BANPU	6MONTH	6	9/1/2008	9/2/2009	402	31,194.00	-9,998,927.85	2,541,060.15	10,000,000.00	25.41

BANPU	6MONTH	7	9/1/2008	9/2/2009	402	31,194.00	-9,998,927.85	2,541,060.15	10,000,000.00	25.41
BBL	3MONTH	2	1/11/2008	10/16/2009	121.5	45,414.00	-4,106,788.88	1,411,012.12	10,000,000.00	14.11

ตาราง4ข (ต่อ)

A	B	C	D	E	F	G	H	I	J	K
BBL	3MONTH	3	1/11/2008	10/16/2009	121.5	45,414.00	-4,106,788.88	1,411,012.12	10,000,000.00	14.11
BBL	3MONTH	4	1/11/2008	10/16/2009	121.5	45,414.00	-4,106,788.88	1,411,012.12	10,000,000.00	14.11
BBL	3MONTH	5	1/11/2008	10/16/2009	121.5	45,414.00	-4,106,788.88	1,411,012.12	10,000,000.00	14.11
BBL	3MONTH	6	1/11/2008	10/16/2009	121.5	45,414.00	-4,106,788.88	1,411,012.12	10,000,000.00	14.11
BBL	3MONTH	7	1/11/2008	10/16/2009	121.5	45,414.00	-4,106,788.88	1,411,012.12	10,000,000.00	14.11
BCP	6MONTH	2	7/10/2008	1/13/2010	15	224,508.00	71,190.80	3,438,810.80	10,000,000.00	34.39
BCP	6MONTH	3	7/10/2008	1/13/2010	15	224,508.00	71,190.80	3,438,810.80	10,000,000.00	34.39
BCP	6MONTH	4	7/10/2008	1/13/2010	15	224,508.00	71,190.80	3,438,810.80	10,000,000.00	34.39
BCP	6MONTH	5	7/10/2008	1/13/2010	15	224,508.00	71,190.80	3,438,810.80	10,000,000.00	34.39
BCP	6MONTH	6	7/10/2008	1/13/2010	15	224,508.00	71,190.80	3,438,810.80	10,000,000.00	34.39
BCP	6MONTH	7	7/10/2008	1/13/2010	15	224,508.00	71,190.80	3,438,810.80	10,000,000.00	34.39
BEC	14DAY	6	1/14/2008	12/25/2009	24.7	255,494.00	-5,756,502.23	554,199.57	10,000,000.00	5.54
BIGC	2MONTH	6	1/9/2008	7/19/2009	45.25	138,096.00	-5,976,700.59	272,143.41	10,000,000.00	2.72

BIGC	2MONTH	7	1/9/2008	7/19/2009	45.25	138,096.00	-5,976,700.59	272,143.41	10,000,000.00	2.72
CPALL	6MONTH	2	6/27/2008	12/29/2009	24.4	220,193.00	1,719,909.52	7,092,618.72	10,000,000.00	70.93

ตาราง4ข (ต่อ)

A	B	C	D	E	F	G	H	I	J	K
CPALL	6MONTH	3	6/27/2008	12/29/2009	24.4	220,193.00	1,719,909.52	7,092,618.72	10,000,000.00	70.93
CPALL	6MONTH	4	6/27/2008	12/29/2009	24.4	220,193.00	1,719,909.52	7,092,618.72	10,000,000.00	70.93
CPALL	6MONTH	5	6/27/2008	12/29/2009	24.4	220,193.00	1,719,909.52	7,092,618.72	10,000,000.00	70.93
CPALL	6MONTH	6	6/27/2008	12/29/2009	24.4	220,193.00	1,719,909.52	7,092,618.72	10,000,000.00	70.93
CPALL	6MONTH	7	6/27/2008	12/29/2009	24.4	220,193.00	1,719,909.52	7,092,618.72	10,000,000.00	70.93
CPF	6MONTH	2	6/26/2008	12/26/2009	11.2	1,203,295.00	-3,140,563.13	10,336,340.87	10,000,000.00	103.36
CPF	6MONTH	3	6/26/2008	12/26/2009	11.2	1,203,295.00	-3,140,563.13	10,336,340.87	10,000,000.00	103.36
CPF	6MONTH	4	6/26/2008	12/26/2009	11.2	1,203,295.00	-3,140,563.13	10,336,340.87	10,000,000.00	103.36
CPF	6MONTH	5	6/26/2008	12/26/2009	11.2	1,203,295.00	-3,140,563.13	10,336,340.87	10,000,000.00	103.36
CPF	6MONTH	6	6/26/2008	12/26/2009	11.2	1,203,295.00	-3,140,563.13	10,336,340.87	10,000,000.00	103.36
CPF	6MONTH	7	6/26/2008	12/26/2009	11.2	1,203,295.00	-3,140,563.13	10,336,340.87	10,000,000.00	103.36
DTAC	3MONTH	4	1/30/2008	10/30/2009	39	139,558.00	-5,141,572.11	301,189.89	10,000,000.00	3.01
DTAC	3MONTH	5	1/30/2008	10/30/2009	39	139,558.00	-5,141,572.11	301,189.89	10,000,000.00	3.01

ESSO	2MONTH	6	7/23/2008	4/1/2010	7.35	399,565.00	-2,095,945.02	840,857.73	10,000,000.00	8.41
ESSO	2MONTH	7	7/23/2008	4/1/2010	7.35	399,565.00	-2,095,945.02	840,857.73	10,000,000.00	8.41

ตาราง4ข (ต่อ)

A	B	C	D	E	F	G	H	I	J	K
GLOW	2MONTH	2	7/4/2008	1/9/2010	33	180,953.00	-4,421,162.33	1,550,286.67	10,000,000.00	15.5
IRPC	6MONTH	2	6/13/2008	12/15/2009	4.28	768,114.00	-3,077,872.86	209,655.06	10,000,000.00	2.1
IRPC	6MONTH	3	6/13/2008	12/15/2009	4.28	768,114.00	-3,077,872.86	209,655.06	10,000,000.00	2.1
IRPC	6MONTH	4	6/13/2008	12/15/2009	4.28	768,114.00	-3,077,872.86	209,655.06	10,000,000.00	2.1
IRPC	6MONTH	5	6/13/2008	12/15/2009	4.28	768,114.00	-3,077,872.86	209,655.06	10,000,000.00	2.1
IRPC	6MONTH	6	6/13/2008	12/15/2009	4.28	768,114.00	-3,077,872.86	209,655.06	10,000,000.00	2.1
IRPC	6MONTH	7	6/13/2008	12/15/2009	4.28	768,114.00	-3,077,872.86	209,655.06	10,000,000.00	2.1
KBANK	6MONTH	2	6/24/2008	12/24/2009	84.75	59,403.00	-3,140,903.75	1,893,500.50	10,000,000.00	18.94
KBANK	6MONTH	3	6/24/2008	12/24/2009	84.75	59,403.00	-3,140,903.75	1,893,500.50	10,000,000.00	18.94
KBANK	6MONTH	4	6/24/2008	12/24/2009	84.75	59,403.00	-3,140,903.75	1,893,500.50	10,000,000.00	18.94
KBANK	6MONTH	5	6/24/2008	12/24/2009	84.75	59,403.00	-3,140,903.75	1,893,500.50	10,000,000.00	18.94
KBANK	6MONTH	6	6/24/2008	12/24/2009	84.75	59,403.00	-3,140,903.75	1,893,500.50	10,000,000.00	18.94
KBANK	6MONTH	7	6/24/2008	12/24/2009	84.75	59,403.00	-3,140,903.75	1,893,500.50	10,000,000.00	18.94

KK	6MONTH	2	7/16/2008	1/16/2010	26	117,547.00	-1,088,073.03	1,968,148.97	10,000,000.00	19.68
KK	6MONTH	3	7/16/2008	1/16/2010	26	117,547.00	-1,088,073.03	1,968,148.97	10,000,000.00	19.68

ตาราง4ข (ต่อ)

A	B	C	D	E	F	G	H	I	J	K
KK	6MONTH	4	7/16/2008	1/16/2010	26	117,547.00	-1,088,073.03	1,968,148.97	10,000,000.00	19.68
KK	6MONTH	5	7/16/2008	1/16/2010	26	117,547.00	-1,088,073.03	1,968,148.97	10,000,000.00	19.68
KK	6MONTH	6	7/16/2008	1/16/2010	26	117,547.00	-1,088,073.03	1,968,148.97	10,000,000.00	19.68
KK	6MONTH	7	7/16/2008	1/16/2010	26	117,547.00	-1,088,073.03	1,968,148.97	10,000,000.00	19.68
KSL	6MONTH	2	7/21/2008	1/21/2010	14.5	206,599.00	-340,337.25	2,655,348.25	10,000,000.00	26.55
KSL	6MONTH	3	7/21/2008	1/21/2010	14.5	206,599.00	-340,337.25	2,655,348.25	10,000,000.00	26.55
KSL	6MONTH	4	7/21/2008	1/21/2010	14.5	206,599.00	-340,337.25	2,655,348.25	10,000,000.00	26.55
KSL	6MONTH	5	7/21/2008	1/21/2010	14.5	206,599.00	-340,337.25	2,655,348.25	10,000,000.00	26.55
KSL	6MONTH	6	7/21/2008	1/21/2010	14.5	206,599.00	-340,337.25	2,655,348.25	10,000,000.00	26.55
KSL	6MONTH	7	7/21/2008	1/21/2010	14.5	206,599.00	-340,337.25	2,655,348.25	10,000,000.00	26.55
KTB	6MONTH	2	7/14/2008	1/14/2010	10.4	1,082,270.00	-5,707,407.36	5,548,200.64	10,000,000.00	55.48
KTB	6MONTH	3	7/14/2008	1/14/2010	10.4	1,082,270.00	-5,707,407.36	5,548,200.64	10,000,000.00	55.48
KTB	6MONTH	4	7/14/2008	1/14/2010	10.4	1,082,270.00	-5,707,407.36	5,548,200.64	10,000,000.00	55.48

KTB	6MONTH	5	7/14/2008	1/14/2010	10.4	1,082,270.00	-5,707,407.36	5,548,200.64	10,000,000.00	55.48
KTB	6MONTH	6	7/14/2008	1/14/2010	10.4	1,082,270.00	-5,707,407.36	5,548,200.64	10,000,000.00	55.48

ลิขสิทธิ์มหาวิทยาลัยเชียงใหม่

Copyright© by Chiang Mai University

All rights reserved

ตาราง 4 ข (ต่อ)

A	B	C	D	E	F	G	H	I	J	K
KTB	6MONTH	7	7/14/2008	1/14/2010	10.4	1,082,270.00	-5,707,407.36	5,548,200.64	10,000,000.00	55.48
LH	3MONTH	2	1/11/2008	10/16/2009	6.2	661,898.00	-3,217,678.43	886,089.17	10,000,000.00	8.86
LH	3MONTH	3	1/11/2008	10/16/2009	6.2	661,898.00	-3,217,678.43	886,089.17	10,000,000.00	8.86
LH	3MONTH	4	1/11/2008	10/16/2009	6.2	661,898.00	-3,217,678.43	886,089.17	10,000,000.00	8.86
LH	3MONTH	5	1/11/2008	10/16/2009	6.2	661,898.00	-3,217,678.43	886,089.17	10,000,000.00	8.86
LH	3MONTH	6	1/11/2008	10/16/2009	6.2	661,898.00	-3,217,678.43	886,089.17	10,000,000.00	8.86
LH	3MONTH	7	1/11/2008	10/16/2009	6.2	661,898.00	-3,217,678.43	886,089.17	10,000,000.00	8.86
MAKRO	1MONTH	7	1/18/2008	12/30/2009	87.5	76,255.00	-6,809,574.88	-137,262.38	10,000,000.00	-1.37
MINT	3MONTH	3	1/14/2008	10/16/2009	11.6	240,209.00	-4,566,813.59	-1,780,389.19	10,000,000.00	-17.8
MINT	3MONTH	4	1/14/2008	10/16/2009	11.6	240,209.00	-4,566,813.59	-1,780,389.19	10,000,000.00	-17.8
MINT	3MONTH	5	1/14/2008	10/16/2009	11.6	240,209.00	-4,566,813.59	-1,780,389.19	10,000,000.00	-17.8
MINT	3MONTH	6	1/14/2008	10/16/2009	11.6	240,209.00	-4,566,813.59	-1,780,389.19	10,000,000.00	-17.8
MINT	3MONTH	7	1/14/2008	10/16/2009	11.6	240,209.00	-4,566,813.59	-1,780,389.19	10,000,000.00	-17.8
PTL	2MONTH	3	1/14/2008	9/20/2009	5.8	565,641.00	-2,150,562.90	1,130,154.90	10,000,000.00	11.3
PTL	2MONTH	4	1/14/2008	9/20/2009	5.8	565,641.00	-2,150,562.90	1,130,154.90	10,000,000.00	11.3

ตาราง 4ข (ต่อ)

A	B	C	D	E	F	G	H	I	J	K
PTL	2MONTH	5	1/14/2008	9/20/2009	5.8	565,641.00	-2,150,562.90	1,130,154.90	10,000,000.00	11.3
PTL	2MONTH	6	1/14/2008	9/20/2009	5.8	565,641.00	-2,150,562.90	1,130,154.90	10,000,000.00	11.3
PTL	2MONTH	7	1/14/2008	9/20/2009	5.8	565,641.00	-2,150,562.90	1,130,154.90	10,000,000.00	11.3
PTTEP	3MONTH	2	1/22/2008	10/22/2009	155.5	34,588.00	-3,496,660.63	1,881,773.37	10,000,000.00	18.82
PTTEP	3MONTH	3	1/22/2008	10/22/2009	155.5	34,588.00	-3,496,660.63	1,881,773.37	10,000,000.00	18.82
PTTEP	3MONTH	4	1/22/2008	10/22/2009	155.5	34,588.00	-3,496,660.63	1,881,773.37	10,000,000.00	18.82
QH	3MONTH	2	1/21/2008	10/21/2009	2.56	671,201.00	777,349.65	2,495,624.21	10,000,000.00	24.96
QH	3MONTH	3	1/21/2008	10/21/2009	2.56	671,201.00	777,349.65	2,495,624.21	10,000,000.00	24.96
QH	3MONTH	4	1/21/2008	10/21/2009	2.56	671,201.00	777,349.65	2,495,624.21	10,000,000.00	24.96
RATCH	3MONTH	7	1/23/2008	1/24/2009	38	168,001.00	-6,505,016.45	-120,978.45	10,000,000.00	-1.21
SCB	1MONTH	6	1/23/2008	1/14/2010	87.25	65,287.00	-3,771,387.43	1,924,903.32	10,000,000.00	19.25
STA	14DAY	3	9/22/2008	1/18/2010	5.85	960,732.00	-228,408.79	5,391,873.41	10,000,000.00	53.92
TPAC	6MONTH	2	7/8/2008	1/8/2010	7.95	564,538.00	-673,271.41	3,814,805.69	10,000,000.00	38.15
TPAC	6MONTH	3	7/8/2008	1/8/2010	7.95	564,538.00	-673,271.41	3,814,805.69	10,000,000.00	38.15
TPAC	6MONTH	4	7/8/2008	1/8/2010	7.95	564,538.00	-673,271.41	3,814,805.69	10,000,000.00	38.15

ตาราง4ข (ต่อ)

A	B	C	D	E	F	G	H	I	J	K
TPAC	6MONTH	5	7/8/2008	1/8/2010	7.95	564,538.00	-673,271.41	3,814,805.69	10,000,000.00	38.15
TPAC	6MONTH	6	7/8/2008	1/8/2010	7.95	564,538.00	-673,271.41	3,814,805.69	10,000,000.00	38.15
TPAC	6MONTH	7	7/8/2008	1/8/2010	7.95	564,538.00	-673,271.41	3,814,805.69	10,000,000.00	38.15
TPC	3MONTH	6	2/11/2008	11/13/2009	18.1	258,953.00	-4,292,938.39	394,110.91	10,000,000.00	3.94
TPC	3MONTH	7	2/11/2008	11/13/2009	18.1	258,953.00	-4,292,938.39	394,110.91	10,000,000.00	3.94
TRUE	6MONTH	2	6/16/2008	12/16/2009	3.16	837,342.00	-3,528,659.82	-882,659.10	10,000,000.00	-8.83
TRUE	6MONTH	3	6/16/2008	12/16/2009	3.16	837,342.00	-3,528,659.82	-882,659.10	10,000,000.00	-8.83
TRUE	6MONTH	4	6/16/2008	12/16/2009	3.16	837,342.00	-3,528,659.82	-882,659.10	10,000,000.00	-8.83
TRUE	6MONTH	5	6/16/2008	12/16/2009	3.16	837,342.00	-3,528,659.82	-882,659.10	10,000,000.00	-8.83
TRUE	6MONTH	6	6/16/2008	12/16/2009	3.16	837,342.00	-3,528,659.82	-882,659.10	10,000,000.00	-8.83
TRUE	6MONTH	7	6/16/2008	12/16/2009	3.16	837,342.00	-3,528,659.82	-882,659.10	10,000,000.00	-8.83

ลิขสิทธิ์มหาวิทยาลัยเชียงใหม่

Copyright© by Chiang Mai University

All rights reserved

ความหมายของสัญลักษณ์

A	Stock	G	จำนวนหลักทรัพย์วันสุดท้าย
B	Simulate time	H	ยอดเงินลงทุนวันสุดท้าย
C	% Action	I	มูลค่ารวมสุทธิ
D	วันเริ่ม	J	ยอดเงินเฉลี่ยที่ใช้ไป
E	วันสุดท้าย	K	ผลตอบแทนสุทธิ(%)
F	ราคาหลักทรัพย์วันสุดท้ายที่ทำการ Simulation		

ตาราง 4 ค แสดงผลการ simulation ของแต่ละหลักทรัพย์

SETNAME	% Action	7 DAY	14 DAY	1 MONTH	2MONTH	3MONTH	6MONTH
ADVANC	2	2.96	-0.36	-0.91	-2.73	-1.07	-0.73
	3	1.97	-0.72	-0.73	-2.94	-1.07	-0.73
	4	-2.62	-0.18	-0.73	-2.57	-1.07	-0.73
	5	-1.71	0.48	-0.98	-2.57	-1.07	-0.73
	6	-0.14	-3.51	-1.63	-0.33	-1.07	-0.73
	7	-3.09	-4.70	-1.63	-0.33	-0.08	-0.73
AJ	2	39.20	39.72	36.26	30.21	34.70	37.16
	3	39.20	39.67	36.26	30.21	34.70	37.15
	4	39.32	39.66	36.31	30.21	34.70	35.96
	5	39.23	39.53	36.31	30.21	34.70	35.96
	6	38.80	39.95	36.41	30.21	34.70	35.37
	7	38.73	40.10	35.75	30.23	35.33	35.37
AOT	2	-25.39	-23.20	-19.03	-17.86	-6.43	1.95
	3	-23.53	-22.70	-19.70	-17.86	-6.43	1.95
	4	-23.63	-24.23	-19.70	-17.86	-6.43	1.95
	5	-23.62	-24.32	-19.63	-17.86	-6.43	1.95
	6	-25.74	-23.92	-18.71	-18.04	-2.89	1.95
	7	-23.67	-23.45	-15.42	-18.04	-2.89	1.95
BANPU	2	-14.21	-17.88	7.56	23.97	18.24	25.41
	3	-15.12	-17.86	7.58	23.97	18.24	25.41
	4	-15.23	-17.84	7.68	23.97	18.24	25.41
	5	-15.05	-17.90	7.68	23.83	18.24	25.41
	6	-14.83	-17.87	9.23	23.83	18.24	25.41
	7	-15.49	-17.83	9.23	23.83	18.24	25.41

ตาราง4ค(ต่อ)

SETNAME	% Action	7 DAY	14 DAY	1 MONTH	2 MONTH	3 MONTH	6 MONTH
BBL	2	2.54	2.78	7.89	5.05	14.11	-4.97
	3	3.06	3.94	7.84	1.60	14.11	-4.97
	4	4.04	8.29	7.84	3.80	14.11	-4.97
	5	5.36	6.28	8.31	3.80	14.11	-4.97
	6	8.00	6.65	8.31	3.80	14.11	-4.97
	7	5.46	6.69	8.06	0.15	14.11	-4.97
BCP	2	5.86	9.98	12.47	16.76	26.11	34.39
	3	5.95	11.05	12.39	16.76	26.21	34.39
	4	7.28	3.25	12.42	16.76	26.21	34.39
	5	7.27	12.40	12.39	16.76	26.21	34.39
	6	6.85	1.69	12.52	16.76	26.21	34.39
	7	13.68	10.31	12.07	16.76	26.21	34.39
BEC	2	-2.42	2.34	3.49	2.24	-7.30	-16.95
	3	-3.14	4.28	3.34	2.59	-7.30	-16.95
	4	-1.17	4.67	-2.01	2.28	-7.51	-16.95
	5	-0.62	4.86	-2.48	2.28	-7.20	-16.95
	6	-0.53	5.54	-2.34	2.28	-7.20	-16.95
	7	-2.08	5.22	-1.99	2.69	-7.20	-16.95
BIGC	2	-5.25	-5.69	-5.26	-0.93	0.05	0.39
	3	-4.46	-7.43	-6.94	-1.00	-1.41	0.39
	4	-4.51	-7.34	-6.72	-0.58	-1.41	0.39
	5	-5.87	-7.59	-3.26	2.58	-1.41	0.39
	6	-6.59	-7.10	-3.52	2.72	-1.41	0.39
	7	-7.13	-3.89	-3.63	2.72	-1.41	0.39

ตาราง4ค(ต่อ)

SETNAME	% Action	7 DAY	14 DAY	1 MONTH	2 MONTH	3 MONTH	6 MONTH
CPALL	2	60.65	59.70	52.03	62.23	69.16	70.93
	3	60.62	59.68	51.68	62.23	69.16	70.93
	4	57.86	59.56	51.82	62.23	69.16	70.93
	5	58.47	57.07	51.40	62.17	69.16	70.93
	6	58.16	59.70	49.05	62.17	69.16	70.93
	7	58.10	59.63	49.05	62.17	69.16	70.93
CPF	2	86.67	84.99	83.93	85.29	79.16	103.36
	3	85.73	83.39	84.48	85.29	79.16	103.36
	4	87.77	82.73	85.15	85.29	79.16	103.36
	5	88.63	82.97	85.54	82.84	79.16	103.36
	6	85.50	83.29	86.69	82.17	79.16	103.36
	7	87.12	76.78	87.97	84.21	79.16	103.36
DTAC	2	-9.70	-4.75	0.34	-1.69	2.50	-8.97
	3	-10.19	-4.67	0.34	-1.69	2.50	-8.97
	4	-10.12	-4.63	0.54	-0.83	3.01	-8.97
	5	-9.40	-3.35	0.99	-0.83	3.01	-8.97
	6	-9.30	-3.40	1.91	-0.70	2.60	-8.97
	7	-8.87	-7.99	1.91	0.05	2.60	-8.97
ESSO	2	-4.68	-5.19	-4.28	-5.81	-4.86	-7.45
	3	-4.88	-4.96	-4.28	-5.71	-4.86	-7.45
	4	-6.20	-4.46	-4.21	-5.71	-4.86	-7.45
	5	-3.75	-8.52	-5.71	8.06	-4.86	-7.45
	6	-7.89	-8.52	-5.59	8.41	-4.86	-7.45
	7	-4.73	-3.71	-4.01	8.41	-4.86	-7.45

ตาราง4ค(ต่อ)

SETNAME	% Action	7 DAY	14 DAY	1 MONTH	2 MONTH	3 MONTH	6 MONTH
GLOW	2	4.38	6.28	6.31	15.50	13.33	13.82
	3	5.47	6.56	6.37	14.11	13.33	13.82
	4	3.18	6.41	6.17	14.11	13.33	13.82
	5	3.19	6.42	3.53	14.11	13.33	13.82
	6	2.91	6.48	3.67	14.11	13.33	13.82
	7	3.07	5.84	2.87	14.11	13.74	13.82
IRPC	2	-11.16	-14.44	-9.42	-14.91	-12.08	2.10
	3	-10.99	-14.60	-9.33	-14.91	-12.08	2.10
	4	-10.84	-14.85	-9.33	-14.91	-12.08	2.10
	5	-10.99	-14.79	-9.33	-16.33	-12.08	2.10
	6	-9.69	-14.42	-9.01	-16.33	-12.08	2.10
	7	-9.75	-16.33	-9.01	-16.33	-12.08	2.10
KBANK	2	8.48	10.31	7.36	13.88	6.83	18.94
	3	12.57	10.23	7.41	13.88	6.83	18.94
	4	12.44	10.35	7.48	13.88	5.32	18.94
	5	13.31	12.22	7.32	13.88	5.32	18.94
	6	15.16	11.46	7.82	10.83	5.32	18.94
	7	14.90	12.86	15.79	10.83	5.32	18.94
KK	2	-9.64	-7.95	-8.68	-7.70	4.50	19.68
	3	-9.64	-7.97	-9.31	-7.70	4.50	19.68
	4	-9.44	-7.96	-7.99	-7.70	4.50	19.68
	5	-10.11	-7.22	-7.99	-7.46	4.50	19.68
	6	-10.08	-7.60	-7.99	-7.46	4.50	19.68
	7	-10.43	-8.25	-7.62	-7.46	4.50	19.68

ตาราง4ค(ต่อ)

SETNAME	% Action	7 DAY	14 DAY	1 MONTH	2 MONTH	3 MONTH	6 MONTH
KSL	2	4.09	2.85	10.13	4.54	24.13	26.55
	3	5.70	2.93	10.20	5.72	24.13	26.55
	4	4.47	4.57	10.59	5.72	24.13	26.55
	5	11.00	11.00	10.83	5.72	24.13	26.55
	6	10.69	10.65	10.63	5.72	24.13	26.55
	7	10.83	10.88	8.97	5.72	24.13	26.55
KTB	2	-13.39	-5.09	3.45	-6.75	7.52	55.48
	3	-7.87	-4.94	3.45	-6.72	7.52	55.48
	4	-8.05	-5.01	3.10	-6.72	7.52	55.48
	5	-7.82	-5.17	3.10	-6.72	7.52	55.48
	6	-7.87	-5.17	3.10	-7.96	7.52	55.48
	7	-6.49	-7.65	3.12	-8.26	7.52	55.48
LH	2	-8.36	-8.06	3.03	2.58	8.86	-31.89
	3	-8.93	-11.55	3.03	2.33	8.86	-31.89
	4	-0.41	-9.82	2.87	3.56	8.86	-31.89
	5	-7.64	-10.27	2.87	3.56	8.86	-31.89
	6	-9.02	-9.25	0.55	3.56	8.86	-31.89
	7	-1.33	-8.98	0.55	3.56	8.86	-31.89
MAKRO	2	-8.44	-9.84	-8.21	-13.76	-9.03	-18.06
	3	-8.31	-9.81	-1.90	-13.76	-9.03	-18.06
	4	-8.14	-7.85	-1.93	-14.15	-9.03	-18.06
	5	-7.92	-7.74	-1.82	-14.35	-12.59	-18.06
	6	-8.51	-7.89	-1.66	-14.04	-12.59	-18.06
	7	-7.79	-7.84	-1.37	-14.04	-12.59	-18.06

ตาราง4ค(ต่อ)

SETNAME	% Action	7 DAY	14 DAY	1 MONTH	2 MONTH	3 MONTH	6 MONTH
MINT	2	-24.93	-23.97	-19.50	-22.39	-17.86	-44.92
	3	-25.13	-23.61	-19.51	-22.39	-17.80	-44.92
	4	-25.00	-23.58	-19.97	-21.45	-17.80	-44.92
	5	-25.00	-23.70	-20.29	-21.45	-17.80	-44.92
	6	-26.66	-23.63	-20.29	-21.45	-17.80	-44.92
	7	-25.48	-23.00	-20.29	-20.96	-17.80	-44.92
PTL	2	-0.67	-0.92	9.62	10.36	4.63	-21.34
	3	-0.74	-0.84	9.76	11.30	4.63	-21.34
	4	-0.65	-0.60	9.80	11.30	4.63	-21.34
	5	-2.54	-3.24	9.78	11.30	4.63	-21.34
	6	0.16	-0.46	9.77	11.30	4.63	-21.34
	7	1.56	0.37	10.19	11.30	4.67	-21.34
PTTEP	2	11.67	-0.64	15.74	12.61	18.82	4.74
	3	11.49	-0.76	15.74	12.61	18.82	4.74
	4	11.59	-1.32	15.74	12.65	18.82	4.74
	5	11.03	-1.41	16.11	14.85	18.64	4.74
	6	11.30	12.37	16.69	14.85	18.64	4.74
	7	15.40	1.80	16.69	14.54	18.64	4.74
QH	2	-3.20	-6.81	6.38	16.05	24.96	-18.60
	3	-3.28	-7.26	6.38	16.05	24.96	-18.60
	4	-3.14	-7.04	5.76	16.05	24.96	-18.60
	5	-3.22	-7.59	5.76	16.05	23.34	-18.60
	6	8.56	-7.55	5.76	15.36	23.34	-18.60
	7	-3.85	-9.86	6.28	15.36	23.34	-18.60

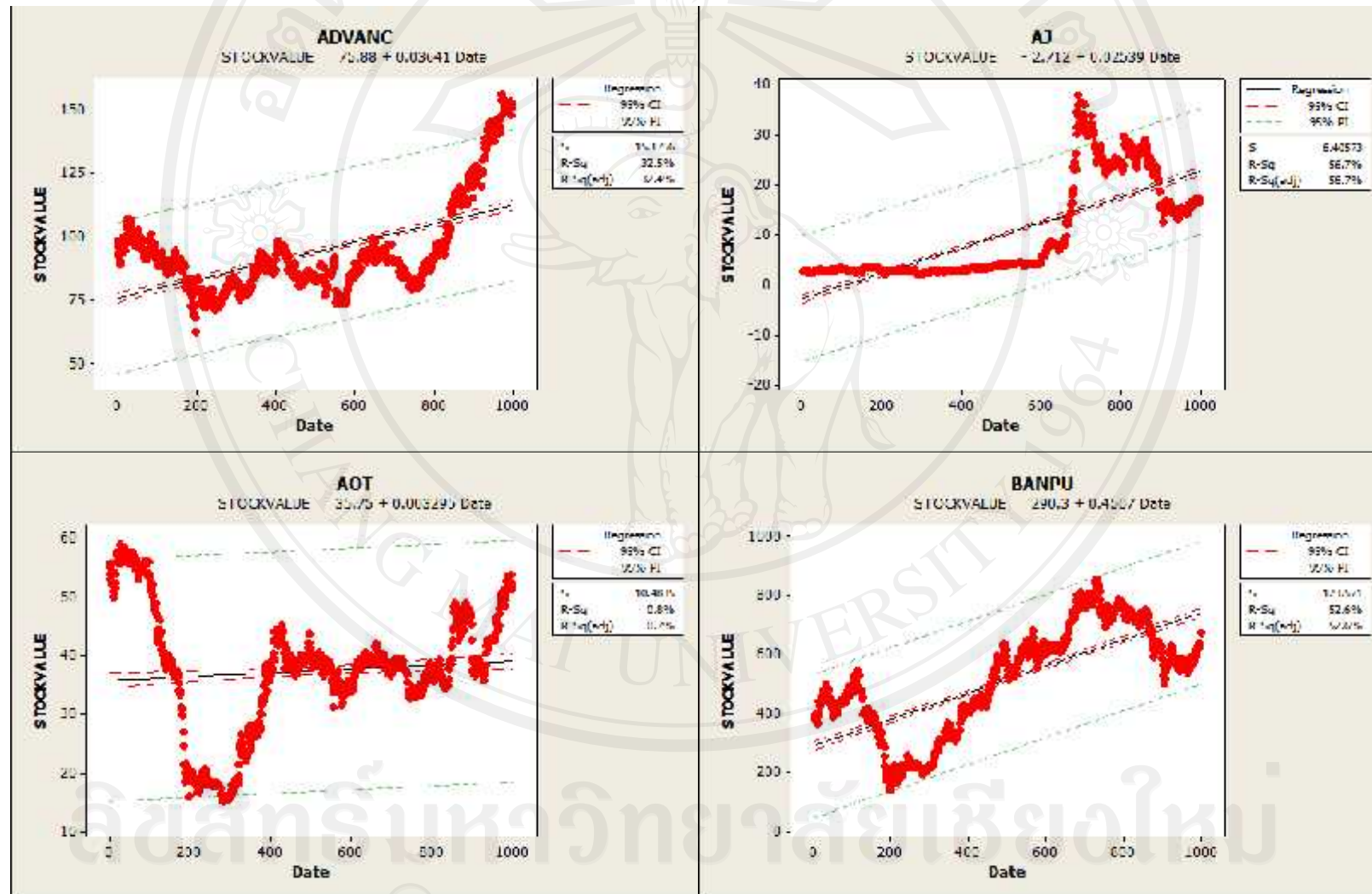
ตาราง4ค(ต่อ)

SETNAME	% Action	7 DAY	14 DAY	1 MONTH	2 MONTH	3 MONTH	6 MONTH
RATCH	2	-8.74	-8.73	-5.21	-9.97	-2.05	-6.86
	3	-7.80	-10.29	-4.95	-11.99	-2.05	-6.86
	4	-7.43	-10.85	-6.66	-11.99	-2.05	-9.52
	5	-10.02	-11.00	-6.38	-10.05	-2.05	-9.52
	6	-9.74	-10.84	-3.92	-10.05	-2.05	-9.52
	7	-10.51	-8.77	-3.92	-10.05	-1.21	-9.52
SCB	2	15.84	13.95	18.12	16.92	16.00	8.82
	3	16.13	13.57	17.99	16.92	16.03	8.82
	4	15.93	14.22	18.01	16.92	16.03	8.82
	5	15.48	14.26	18.01	16.92	16.03	8.28
	6	18.01	14.53	19.25	16.23	16.03	8.28
	7	14.74	14.07	14.74	12.22	16.03	8.28
STA	2	39.63	52.10	39.65	31.26	44.54	25.62
	3	38.77	53.92	35.23	31.26	44.54	25.62
	4	38.59	53.46	35.05	31.26	44.54	25.62
	5	41.14	53.04	35.05	28.70	49.15	25.62
	6	41.07	52.93	35.05	28.70	49.15	25.62
	7	41.04	52.66	34.19	28.70	49.15	25.62
TPAC	2	23.48	25.27	32.47	26.51	36.61	38.15
	3	25.09	30.08	32.47	26.51	36.61	38.15
	4	25.04	28.18	32.48	26.51	36.61	38.15
	5	25.30	27.87	32.41	26.54	36.96	38.15
	6	27.85	28.29	32.94	26.34	36.96	38.15
	7	24.67	28.15	32.94	26.34	36.96	38.15

ตาราง4ค(ต่อ)

SETNAME	% Action	7 DAY	14 DAY	1 MONTH	2 MONTH	3 MONTH	6 MONTH
TPC	2	-6.69	-2.85	-4.22	-1.77	3.10	2.44
	3	-6.27	-2.99	-5.10	-2.10	3.10	2.44
	4	-7.62	-3.86	-5.10	-2.10	3.10	2.44
	5	-5.86	-3.58	-4.27	-2.10	3.10	2.44
	6	-6.10	-3.98	-6.66	1.40	3.94	1.56
	7	-6.83	-3.27	0.57	1.40	3.94	1.56
TRUE	2	-30.14	-24.11	-34.18	-24.75	-25.25	-8.83
	3	-30.11	-24.23	-34.18	-24.75	-25.25	-8.83
	4	-30.03	-24.32	-34.18	-24.75	-25.25	-8.83
	5	-29.95	-23.94	-34.18	-24.75	-25.25	-8.83
	6	-29.95	-24.72	-34.18	-25.42	-25.25	-8.83
	7	-30.60	-25.10	-34.18	-25.42	-25.25	-8.83

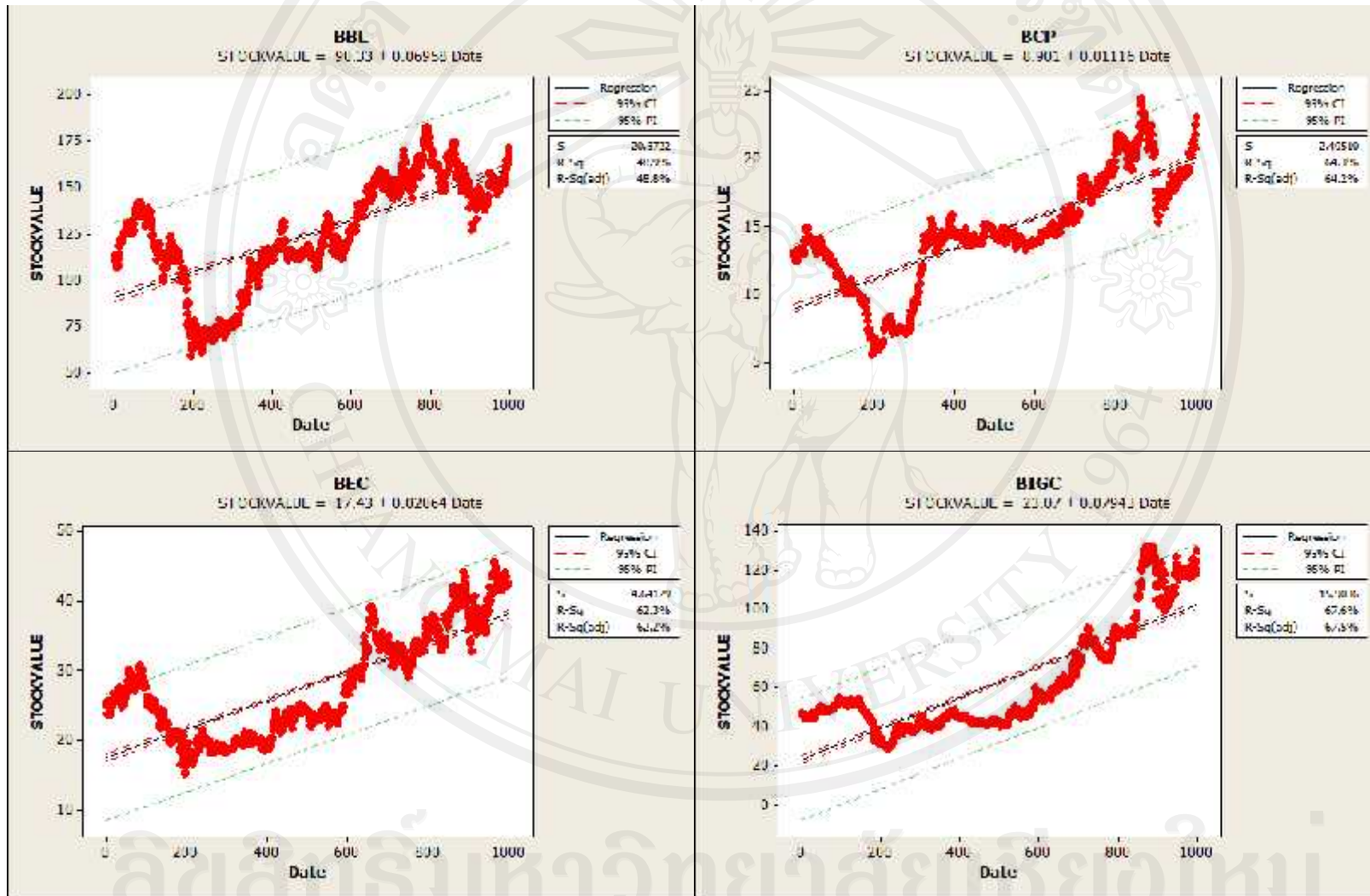
รูปภาพ4ง กราฟแสดงการทำ Linear Regression เพื่อทดสอบผลการจำลอง โดยดูวันแรกในการเริ่มการทดสอบผลการทดลอง



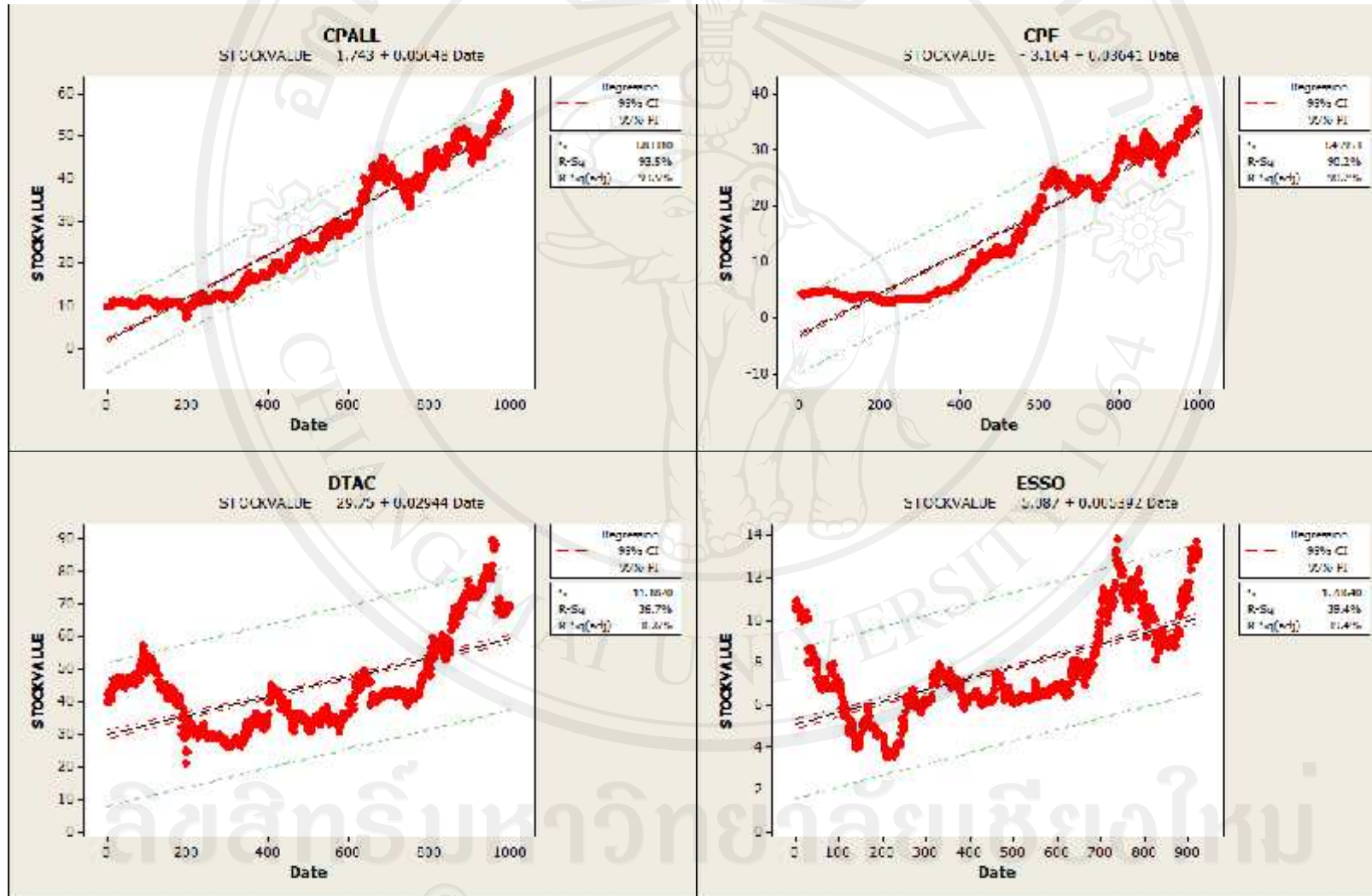
รูปภาพ4ง (ต่อ)



ลิขสิทธิ์มหาวิทยาลัยเชียงใหม่
Copyright© by Chiang Mai University
All rights reserved



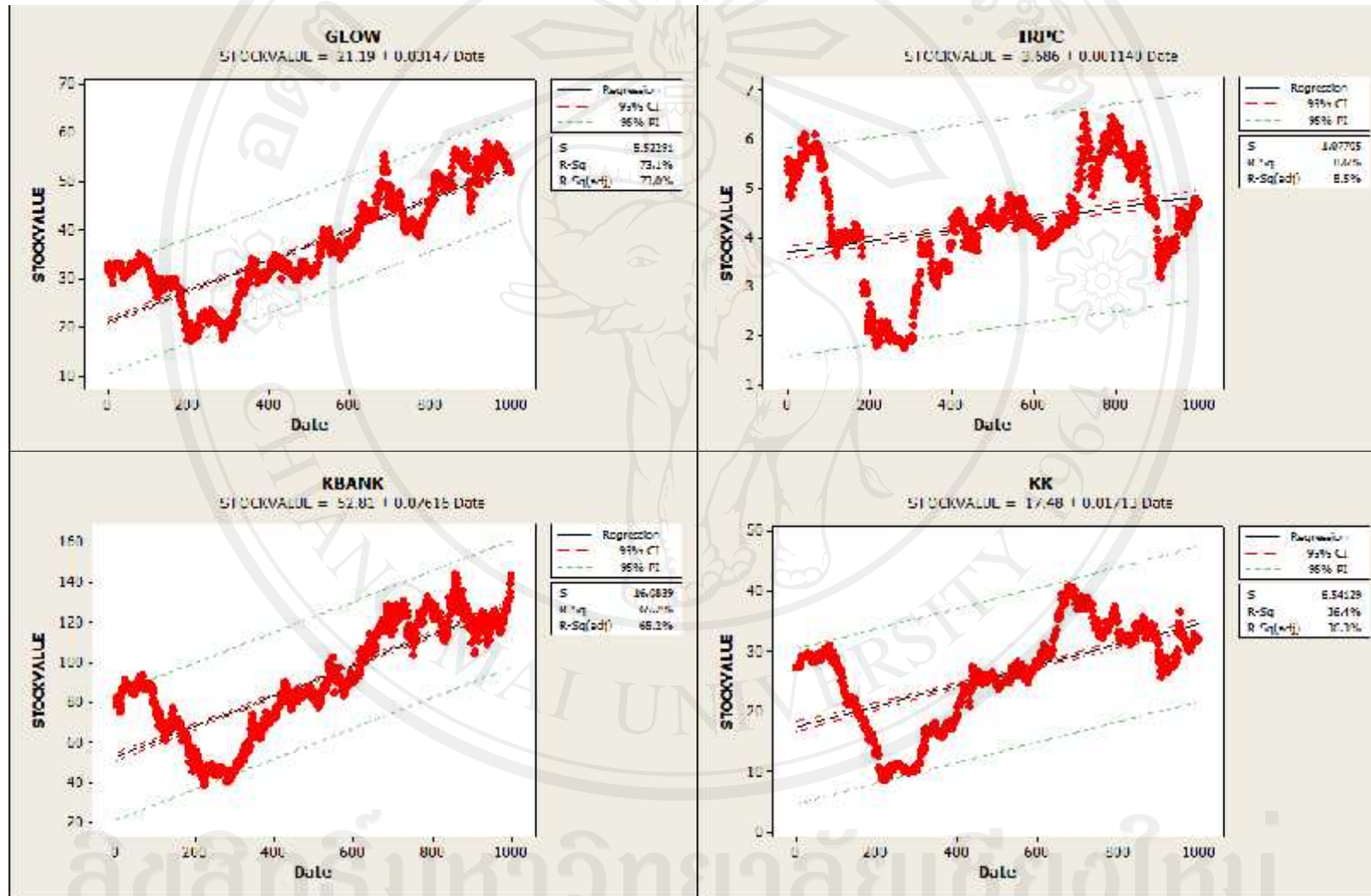
รูปภาพง (ต่อ)



รูปภาพ4ง (ต่อ)



ลิขสิทธิ์มหาวิทยาลัยเชียงใหม่
Copyright© by Chiang Mai University
All rights reserved

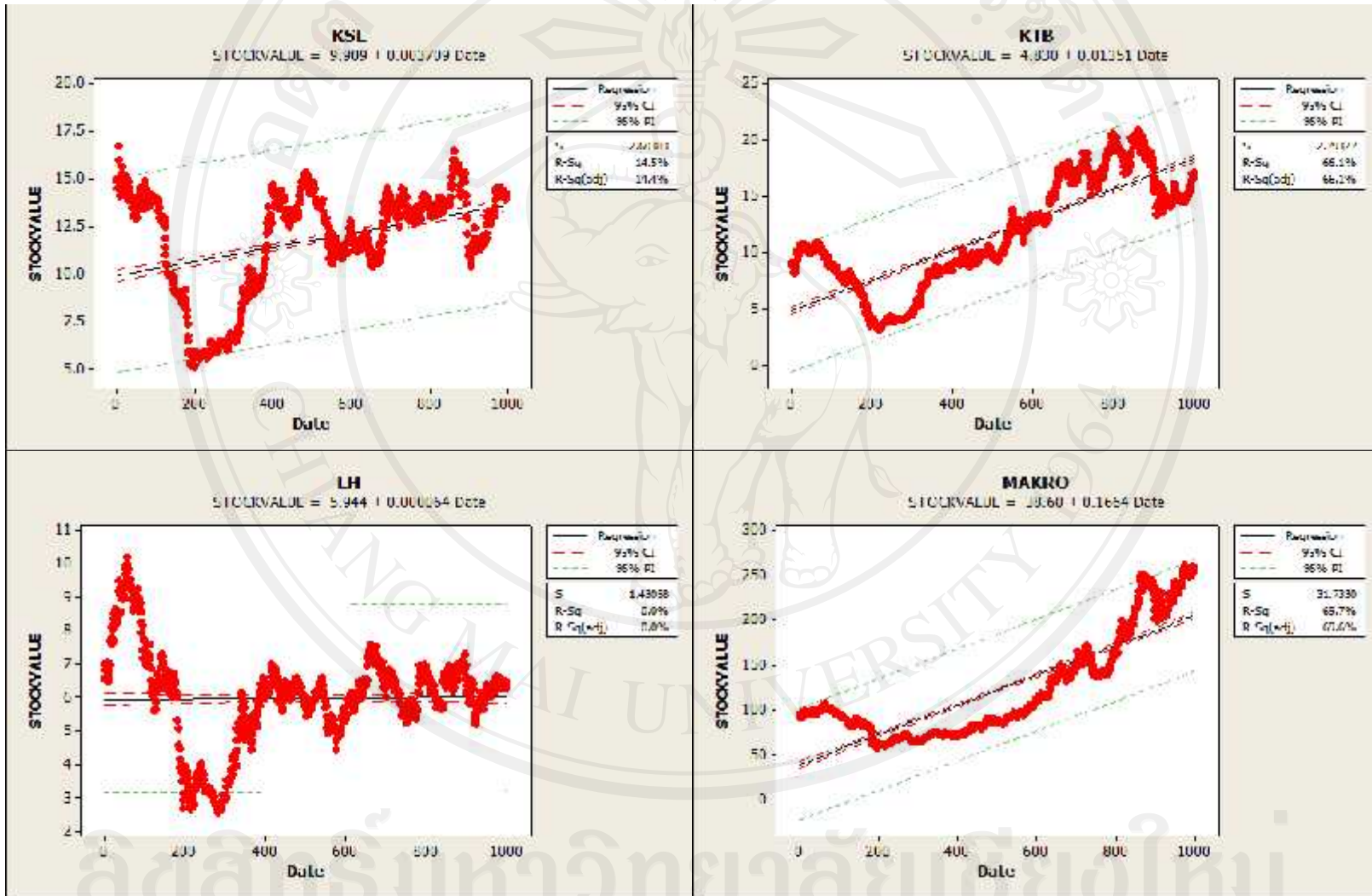


รูปภาพ4ง (ต่อ)

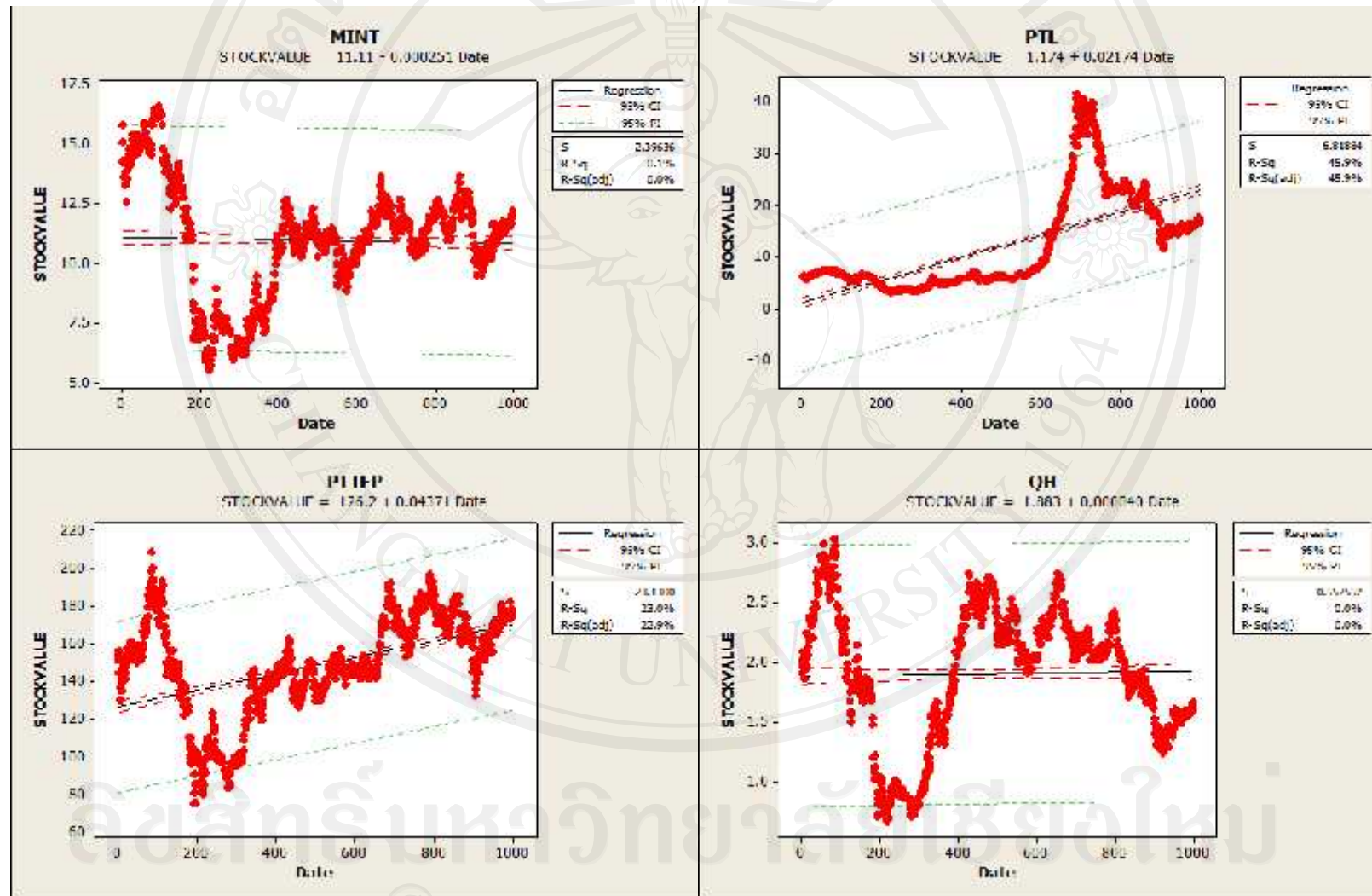


ลิขสิทธิ์มหาวิทยาลัยเชียงใหม่

Copyright© by Chiang Mai University
All rights reserved



รูปภาพ4ง (ต่อ)



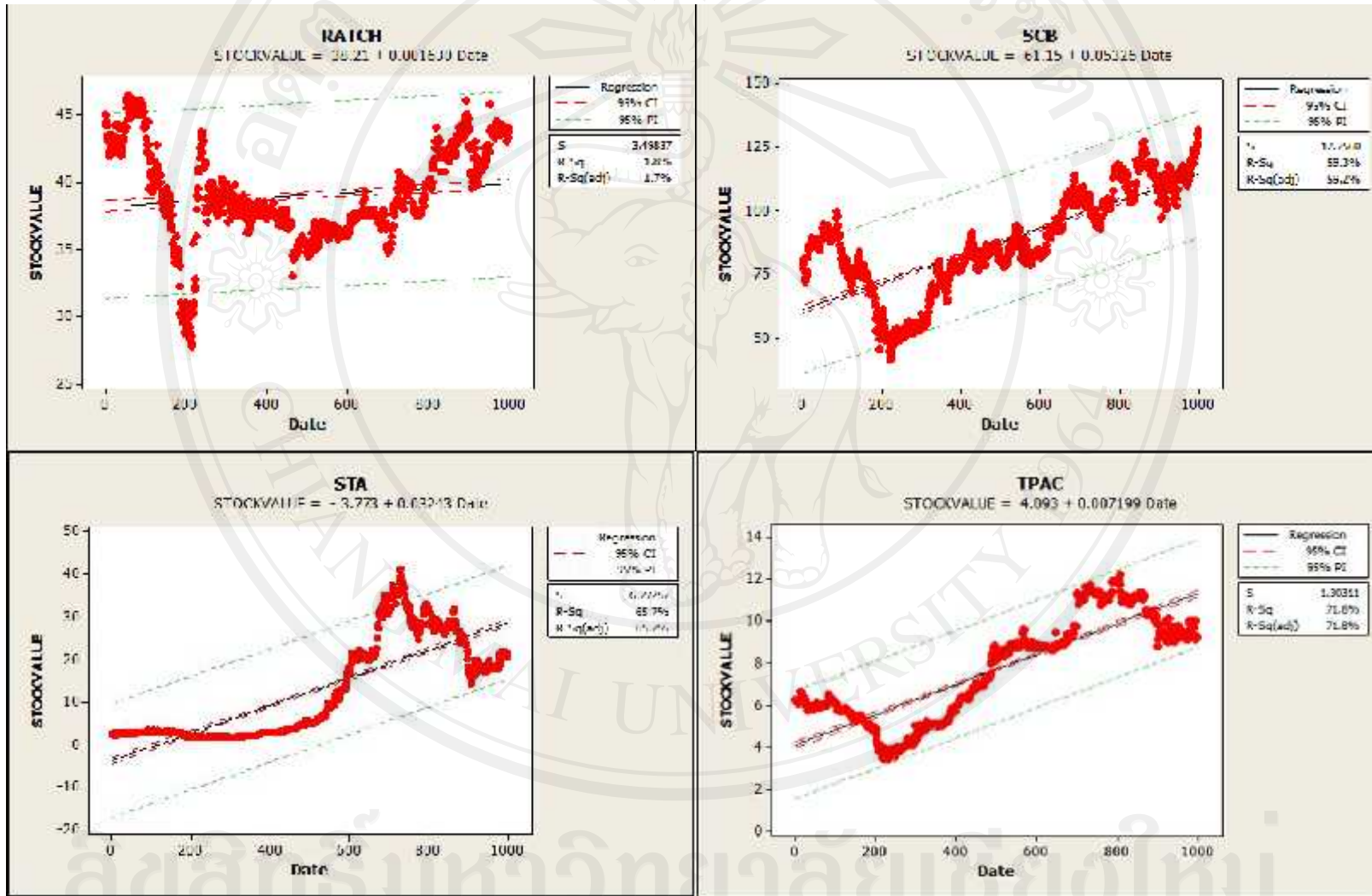
รูปภาพ4ง (ต่อ)



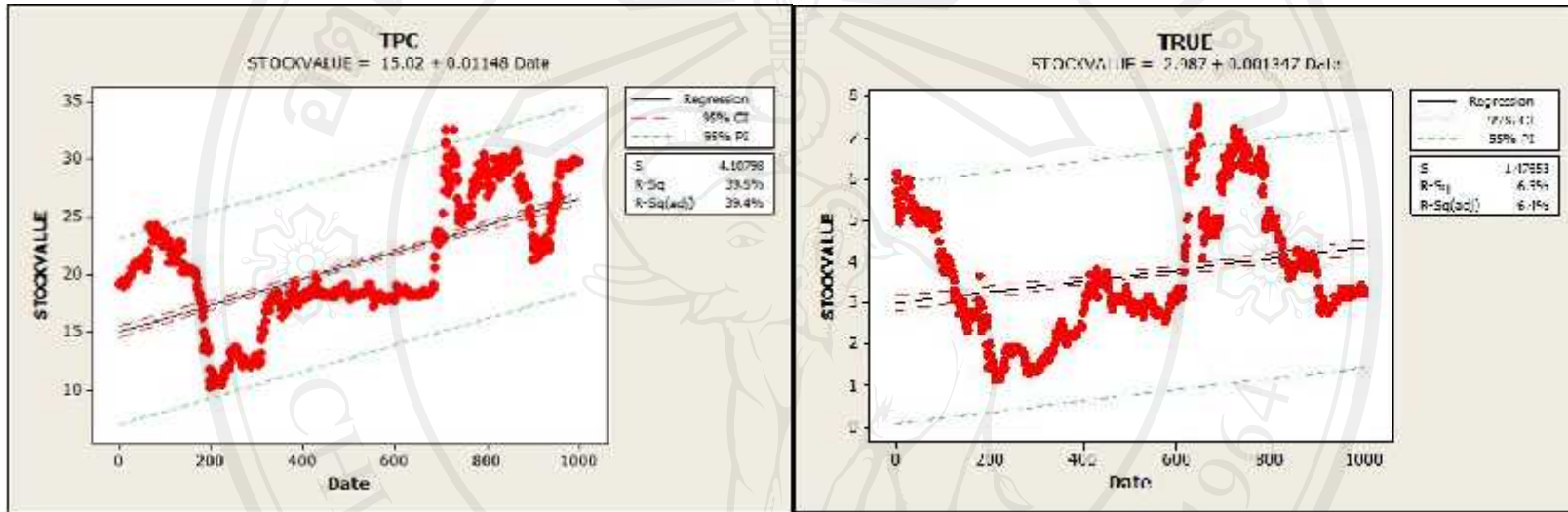
ลิขสิทธิ์มหาวิทยาลัยเชียงใหม่

Copyright© by Chiang Mai University

All rights reserved



รูปภาพ4ง (ต่อ)



ลิขสิทธิ์มหาวิทยาลัยเชียงใหม่

Copyright© by Chiang Mai University

All rights reserved

ประวัติผู้เขียน

ชื่อ

นางสาวจรรยาภรณ์ ตันติพลากร

วัน เดือน ปี เกิด

23 มีนาคม 2525

ประวัติการศึกษา

สำเร็จการศึกษามัธยมศึกษาตอนปลาย

โรงเรียนวัดโนนทัยพายัพ ปีการศึกษา 2542

สำเร็จการศึกษาปริญญาตรี วิศวกรรมบัณฑิต

สาขาวิศวกรรมคอมพิวเตอร์ มหาวิทยาลัยเชียงใหม่

ปีการศึกษา 2546

ประวัติการทำงาน

Software Engineer บริษัท ไชโย เอเอ จำกัด

IT บริษัท โสยา กลาสติสก์(ไทยแลนด์) จำกัด